



## ZF 7650 NR2B

Vertical offset, remote mount marine transmission.

### Description

- 2 shaft non reverse reduction transmission with hydraulic clutch mounted on the input shaft.
- Fully works tested, reliable and simple to install .
- Suitable for commercial vessels in all applications as well as for motoryachts etc .
- Design, manufacture and quality control standards comply with ISO 9001 and AQAP .
- Compatible with all types of engines and propulsion systems, including waterjets and surface-piercing propellers and cpps .

### Features

- Lightweight and robust aluminum alloy casing (sea water resistant) .
- Case hardened and precisely ground gear teeth for long life and smooth running .
- Output shaft thrust bearing designed to take maximum propeller thrust astern and ahead .
- Smooth and reliable hydraulic shifting with control lever for attachment of push-pull cable or other operating system .
- Compact, space-saving design, complete with oil cooler, pump and full flow filter .
- Suitable for multi engine installations.

### Options

- Classification by all major Classification Societies on request .
- Monitoring devices fitted and connected to a terminal box as required .
- Trailing pump to guarantee adequate transmission lubrication when the output shaft is rotated with the input shaft stationary .



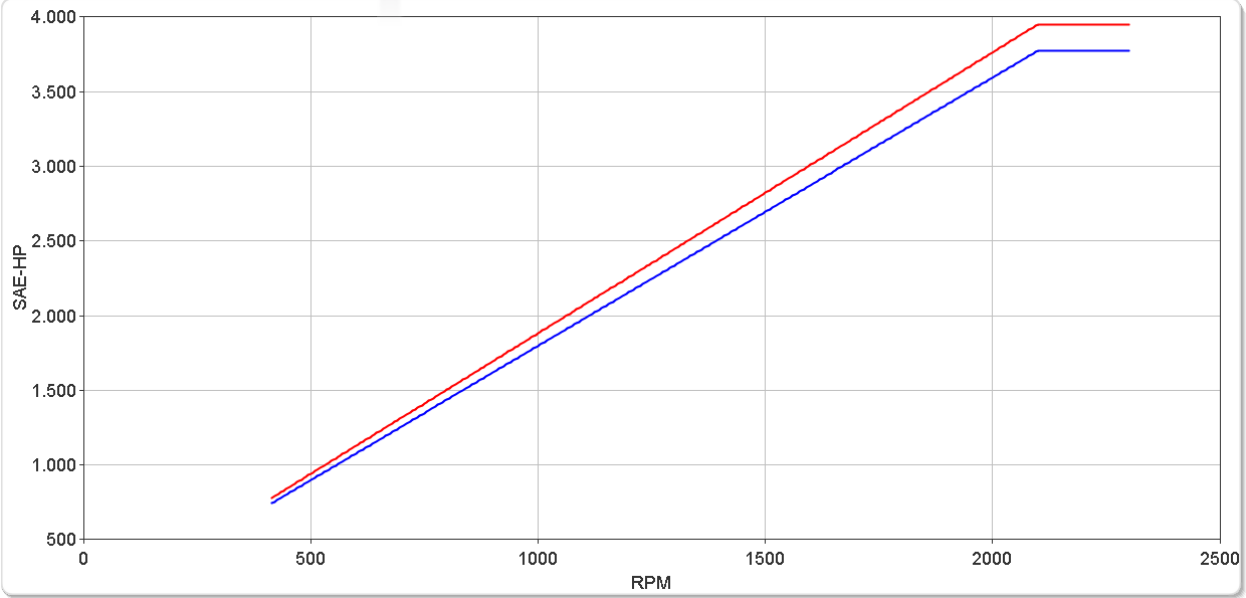
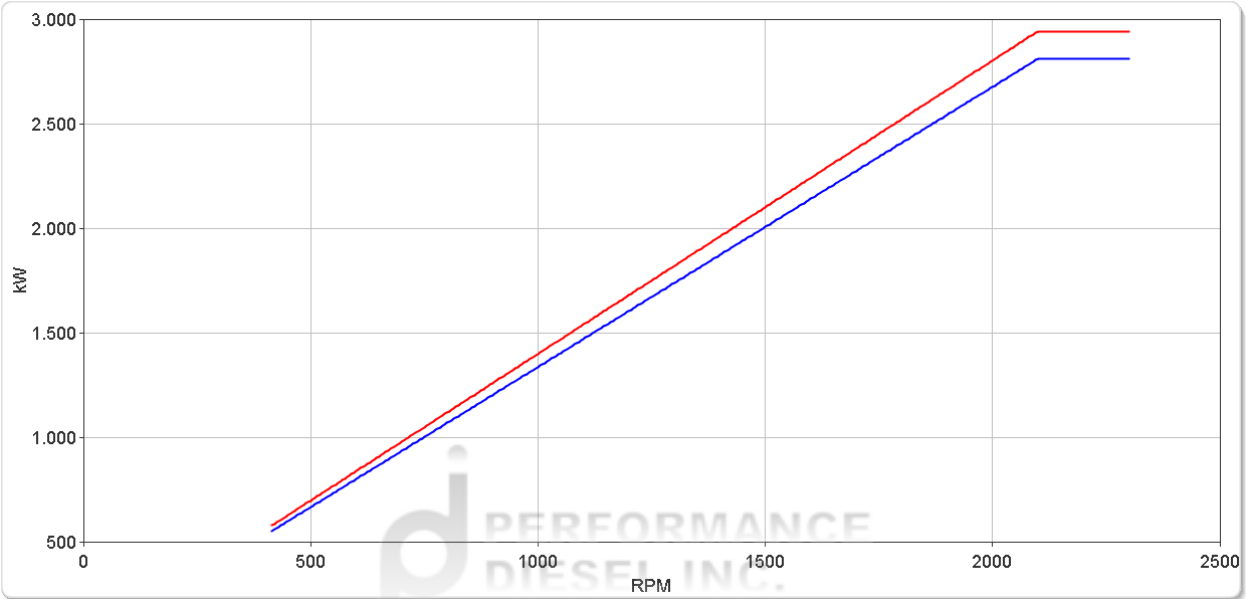
# ZF 7650 NR2B

## Ratings

### Pleasure Duty

RATIOS	MAX. TORQUE		POWER/RPM		INPUT POWER CAPACITY						MAX. RPM
	Nm	ftlb	kW	hp	1800 rpm		2000 rpm		2100 rpm		
<span style="color: red;">■</span> 1.485*, 1.828*, 2.037, 2.231*, 2.565, 2.773*, 2.905	13400	9883	1.4031	1.8816	2526	3387	2806	3763	2947	3951	2300
<span style="color: blue;">■</span> 3.174*	12800	9441	1.3403	1.7974	2413	3235	2681	3595	2815	3775	2300

\* Special Order Ratio.



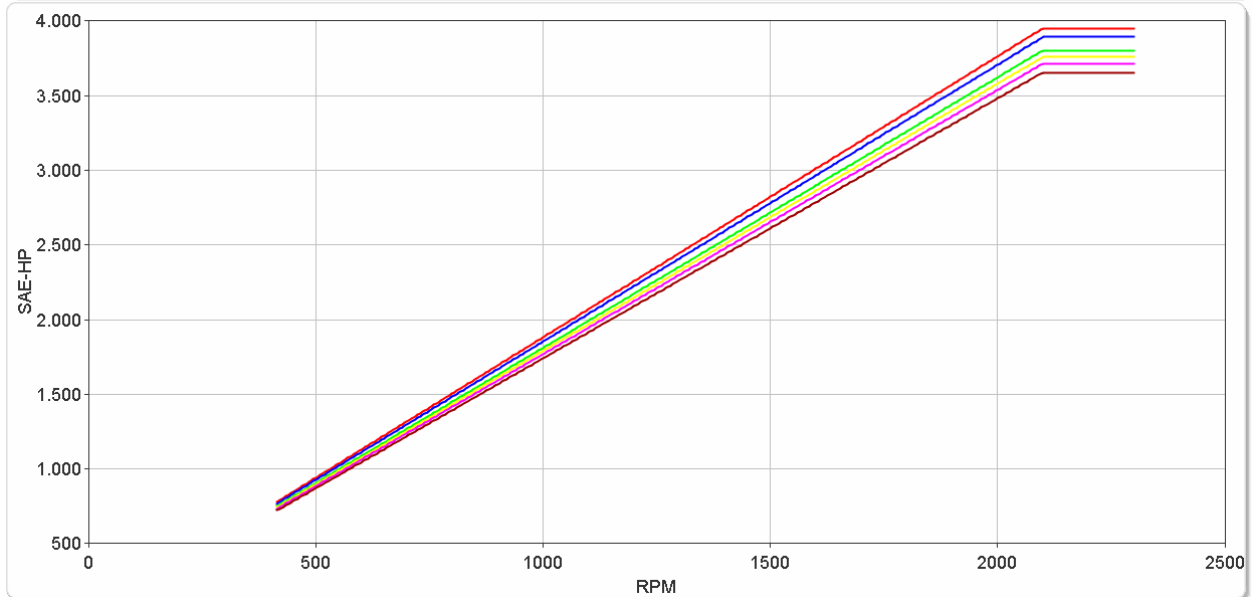
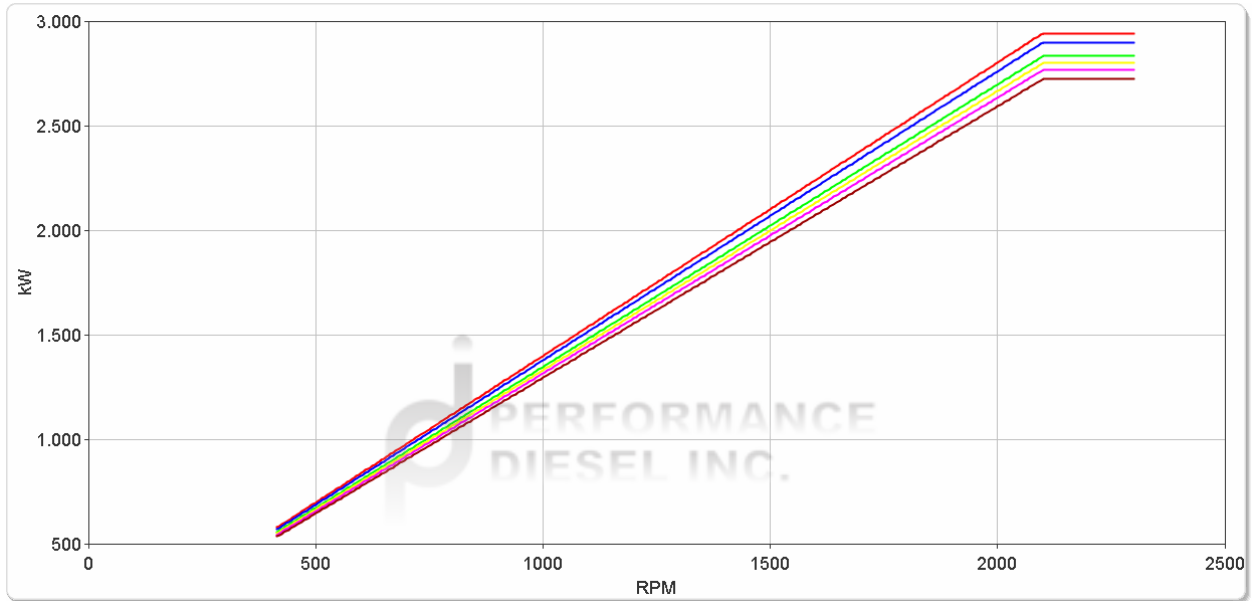
# ZF 7650 NR2B

## Ratings

### Light Duty

RATIOS	MAX. TORQUE		POWER/RPM		INPUT POWER CAPACITY						MAX. RPM
	Nm	ftlb	kW	hp	1800 rpm		2000 rpm		2100 rpm		
					kW	hp	kW	hp	kW	hp	
1.485*, 1.828*, 2.037	13400	9883	1.4031	1.8816	2526	3387	2806	3763	2947	3951	2300
2.231*	13200	9736	1.3822	1.8536	2488	3336	2764	3707	2903	3892	2300
2.565	12900	9515	1.3508	1.8114	2431	3261	2702	3623	2837	3804	2300
2.773*	12750	9404	1.3351	1.7904	2403	3223	2670	3581	2804	3760	2300
2.905	12600	9293	1.3194	1.7693	2375	3185	2639	3539	2771	3716	2300
3.174*	12400	9146	1.2984	1.7412	2337	3134	2597	3482	2727	3657	2300

\* Special Order Ratio.



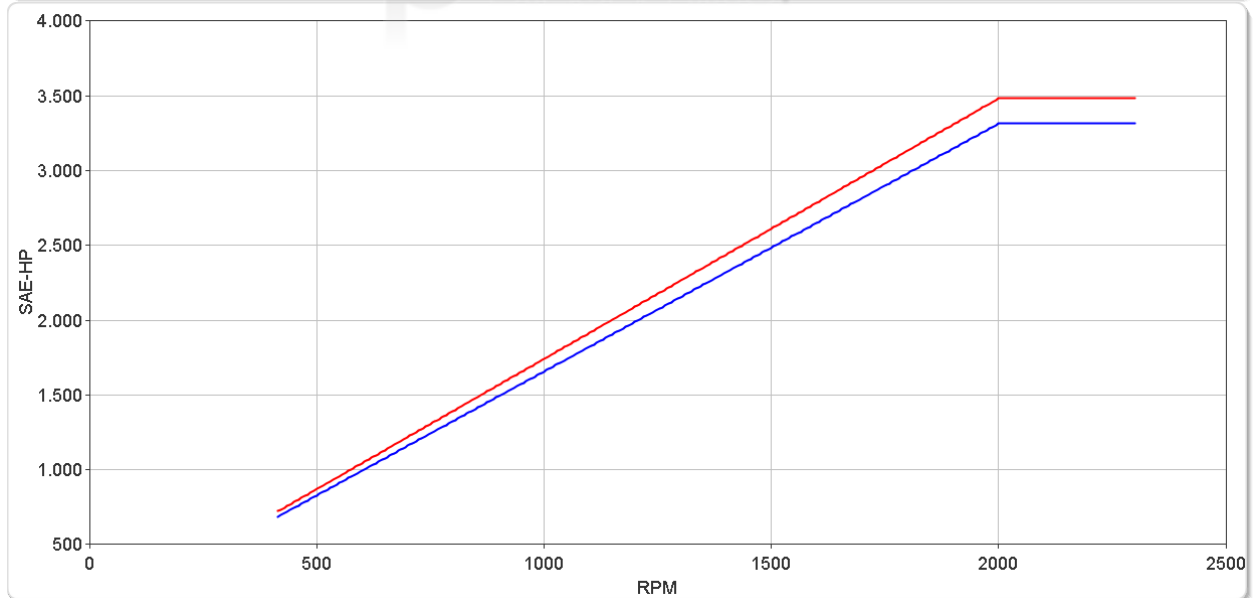
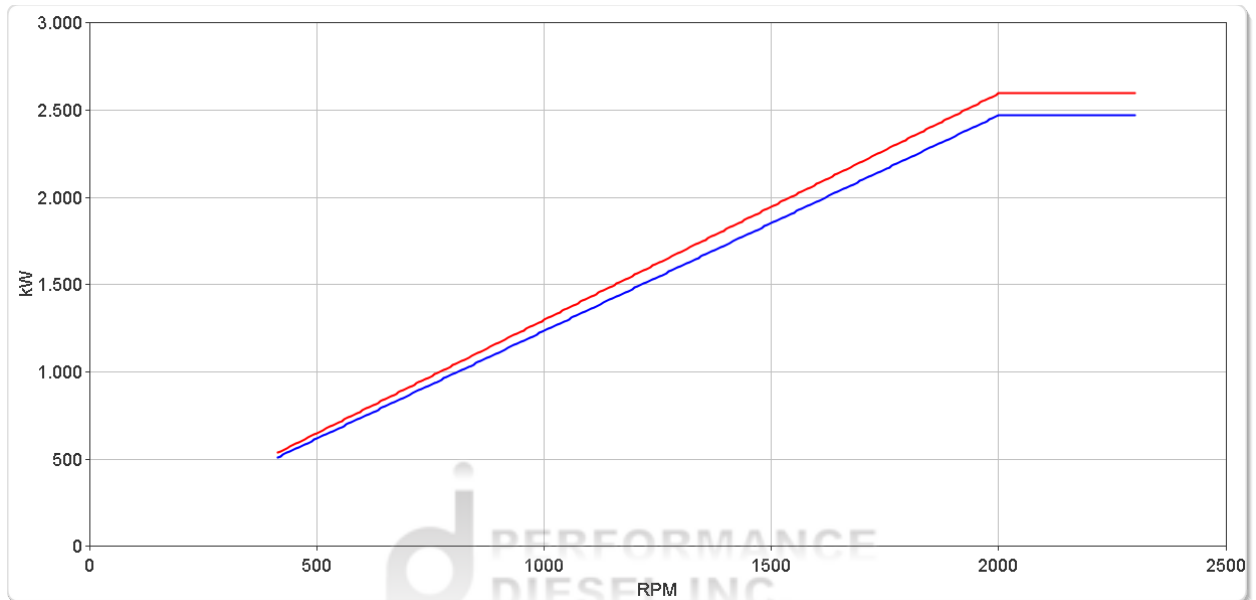
# ZF 7650 NR2B

## Ratings

### Medium Duty

RATIOS	MAX. TORQUE		POWER/RPM		INPUT POWER CAPACITY						MAX. RPM
	Nm	ftlb	kW	hp	1600 rpm		1800 rpm		2000 rpm		
					kW	hp	kW	hp	kW	hp	
<span style="color: red;">■</span> 1.485*, 1.828*, 2.037, 2.231*, 2.565, 2.773*, 2.905 <span style="color: blue;">■</span> 3.174*	12400	9146	1.2984	1.7412	2077	2786	2337	3134	2597	3482	2300
	11800	8703	1.2356	1.6570	1977	2651	2224	2983	2471	3314	2300

\* Special Order Ratio.



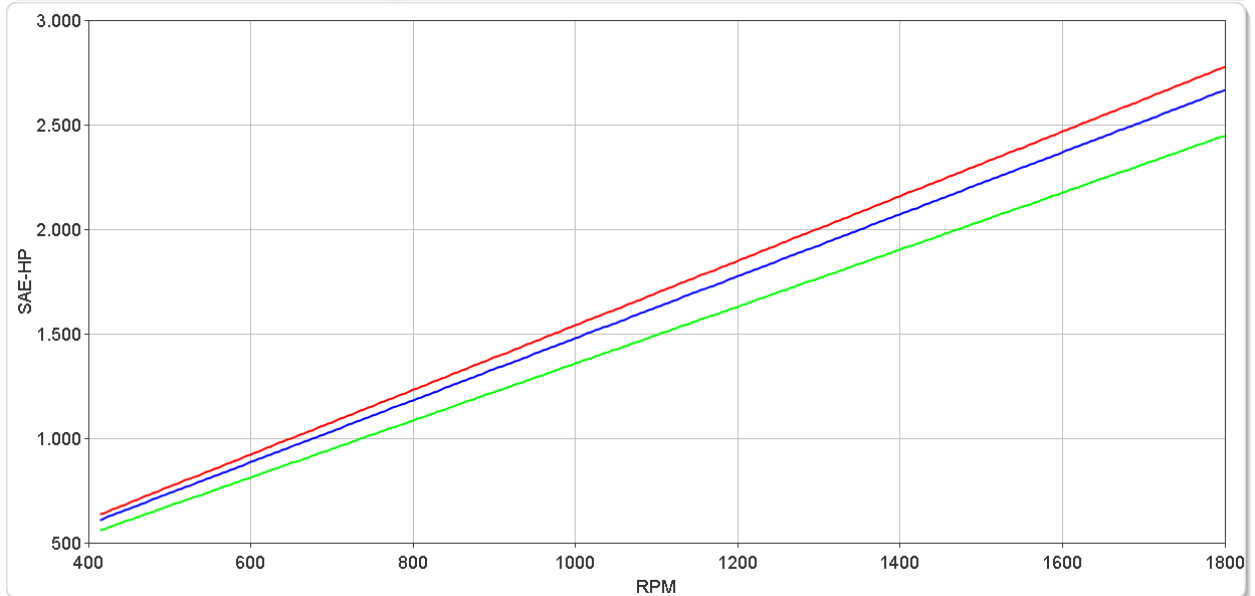
# ZF 7650 NR2B

## Ratings

### Continuous Duty

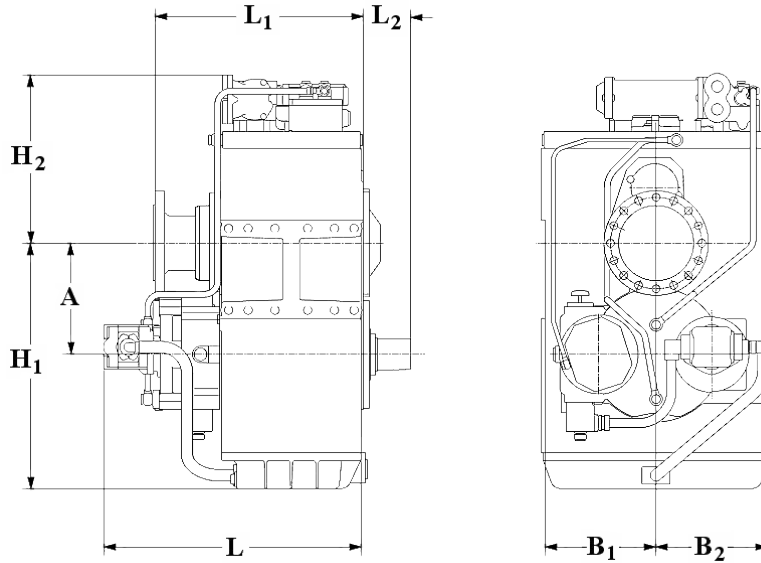
RATIOS	MAX. TORQUE		POWER/RPM		INPUT POWER CAPACITY						MAX. RPM
	Nm	ftlb	kW	hp	1200 rpm		1600 rpm		1800 rpm		
1.485*, 1.828*, 2.037, 2.231*, 2.565, 2.773*	11000	8113	1.1518	1.5446	1382	1854	1843	2471	2073	2780	1800
2.905	10560	7789	1.1058	1.4828	1327	1779	1769	2373	1990	2669	1800
3.174*	9700	7154	1.0157	1.3621	1219	1635	1625	2179	1828	2452	1800

\*Special Order Ratio.



# ZF 7650 NR2B

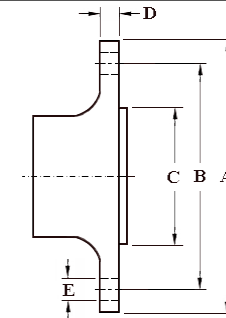
## Dimensions



mm (inches)							
A	B <sub>1</sub>	B <sub>2</sub>	H <sub>1</sub>	H <sub>2</sub>	L	L <sub>1</sub>	L <sub>2</sub>
340 (13.4)	352 (13.8)	352 (13.8)	750 (29.5)	520 (20.5)	795 (31.3)	638 (25.1)	146 (5.70)
Weight kg (lb)				Oil Capacity Litre (US qt)			
720 ( 1,584)				50.0 (53.0)			

### Output Coupling Dimensions

A		B		C		D		Bolt Holes		
mm	in	mm	in	mm	in	mm	in	No.	Diameter (E)	
									mm	in
320	12.6	280	11.0	230	9.06	30.0	1.18	16	24.2	0.95



## Duty Definitions

<b>PLEASURE DUTY DEFINITION</b>	Highly intermittent operation with very large variations in engine speed and power
Average engine operating hours limit:	500 hours/year 300 hours/year for mechanical gearboxes
Typical hull forms:	Planing.
Typical applications:	Private, non-commercial, non-charter sport/leisure activities.
<b>LIGHT DUTY DEFINITION</b>	Intermittent operation with large variations in engine speed and power
Average engine operating hours limit:	2500 hours/year (for hydraulic gearboxes smaller than the ZF 650 series, 2000 hours/year).
Typical hull forms:	Planing and semi-displacement.
Typical applications:	Private and charter, sport/leisure activities, naval and police activities.
<b>MEDIUM DUTY DEFINITION</b>	Intermittent operation with some variations in engine speed and power
Average engine operating hours limit:	4000 hours/year. 3500 hours/year for gearboxes smaller than ZF 2000 series and workboat ZF W2700 series.
Typical hull forms:	Semi-displacement and displacement
Typical applications:	Charter and commercial craft (example: crew boats and fast ferries), and naval and police activities.
<b>CONTINUOUS DUTY DEFINITION</b>	Continuous operation with little or no variations in engine speed and power
Average engine operating hours limit:	Unlimited
Typical hull forms:	Displacement.
Typical applications:	Heavy duty commercial vessels, tugs, fishing boats.

## Duty Ratings

Ratings apply to marine diesel engines at the indicated speeds. At other engine speeds, the respective power capacity (kW) of the transmission can be obtained by multiplying the Power/Speed ratio by the speed.

Approximate conversion factors:

1 kW = 1.36 metric hp

1 kW = 1.34 U.S. hp (SAE)

1 U.S. hp = 1.014 metric hp

1 Nm = 0.74 lb.ft.

Ratings apply to right hand turning engines, i.e. engines having counterclockwise rotating flywheels when viewing the flywheel end of the engine.

These ratings allow full power through forward and reverse gear trains, unless otherwise stated.

Contact your nearest ZF Sales and Service office for ratings applicable to gas turbines, gasoline (petrol) engines, as well as left hand turning engines, and marine transmissions for large horsepower capacity engines.

Ratings apply to marine transmissions currently in production or in development and are subject to change without prior notice.

**NOTE: THE MAXIMUM RATED INPUT POWER MUST NOT BE EXCEEDED (SEE RESPECTIVE RATINGS IN THE TECHNICAL DATA SHEETS)**

## Safe Operating Notice

The safe operation of ZF products depends upon adherence to technical data presented in our brochures. Safe operation also depends upon proper installation, operation and routine maintenance and inspection under prevailing conditions and recommendations set forth by ZF. Damage to transmission caused by repeated or continuous emergency manoeuvres or abnormal operation is not covered under warranty. It is the responsibility of users and not ZF to provide and install guards and safety devices, which may be required by recognized safety standards of the respective country (e.g. for U.S.A. the Occupational Safety Act of 1970 and its subsequent provisions).

## Monitoring Notice

The safe operation of ZF products depends upon adherence to ZF monitoring recommendations presented in our operating manuals, etc. It is the responsibility of users and not ZF to provide and install monitoring devices and safety interlock systems as may be deemed prudent by ZF. Consult ZF for details and recommendations.

## Torsional Responsibility and Torsional Couplings

The responsibility for ensuring torsional compatibility rests with the assembler of the drive and driven equipment. ZF can accept no liability for gearbox noise caused by vibrations or for damage to the gearbox, the flexible coupling or to other parts of the drive unit caused by this kind of vibration. Contact ZF for further information and assistance. ZF recommends the use of a torsional limit stop for single engine powered boats, wherein loss of propulsion power can result in loss of control. It is the buyer's responsibility to specify this option, which can result in additional cost and a possible increase in installation length.

ZF can accept no liability for personal injury, loss of life, or damage or loss of property due to the failure of the buyer to specify a torsional limit stop. ZF selects torsional couplings on the basis of nominal input torque ratings and commonly accepted rated engine governed speeds. Consult ZF for details concerning speed limits of standard offering torsional couplings, which can be less than the transmission limit. Special torsional couplings may be required for Survey Society Ice Classification requirements.

